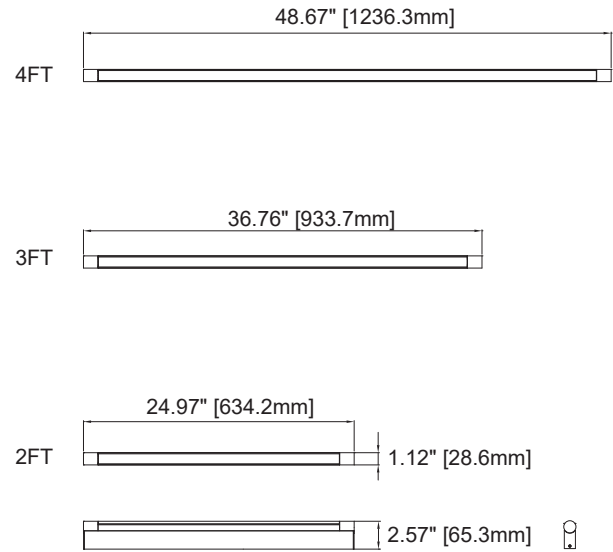


# Specification sheet

REV.3

Slimliter Face  
Vanity / Mirror Application



## Description

With its ultra-slim profile and integrated dimmable driver, Slimliter Face is a unique light fixture for vanity applications. The design aesthetics is sharp and modern. The diffusive lens is highly efficient and still able to keep LEDs hidden to create a visually comfortable experience and deliver beautiful and smooth lighting effect. The light unit can rotate up to 120° to aim and fine-tune lighting effects. The built-in driver keeps the installation simple and hassle-free.

## Features

LED	LM80 rated LED array
Color temperature	2700K/ 3000K/ 3500K/ 4000K
Optics	Flood
Driver	Integrated Class 2 driver

## Performance

Delivered output	Up to 400 lm / ft.
Power consumption	Up to 6 W / ft.
Color rendering	90+ CRI (80 CRI+ optional)
CBCP	239 cd

## Electrical and Control

Input voltage	See the ordering code
Control	0-10V / ELV dimming
Feature	Overload & short circuit protection

## Construction

Material	Machining grade Aluminum
Finishes	White / Black / Brush Aluminum
Lens	Diffusive

## Rating/ Certification/ Warranty

- Dry and damp Locations
- RoHS compliant
- 5 years/ 50,000 hrs warranty

## Ordering Code Information

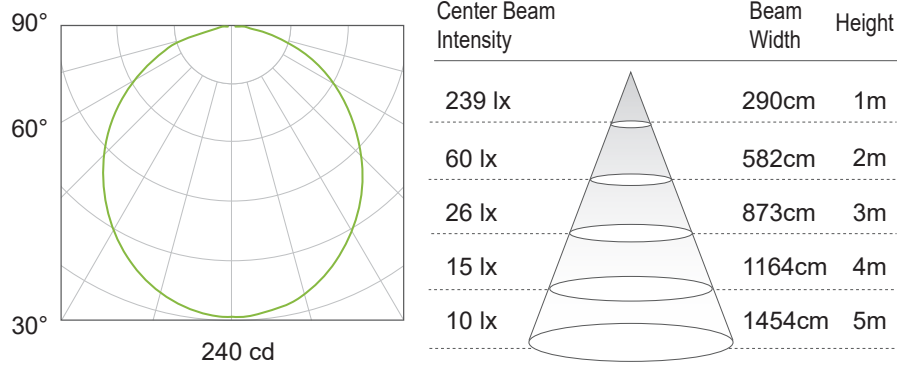
PRODUCT	FIXTURE LENGTH	LUMEN	COLOR TEMPERATURE	FINISH	COLOR RENDERING	INPUT VOLTAGE
SLF	2	ST	27	NM	9	3A
Slimliter Face	2 (2'Slimliter Tube) 3 (3'Slimliter Tube) 4 (4'Slimliter Tube)	ST Standard (400 lm/FT)	27 (2700K) 30 (3000K) 35 (3500K) 40 (4000K)	NM (Brush Aluminum) WH (Matte White) BK (Matte Black)	8 (80+ CRI) 9 (90+ CRI)	3A (120-277V / 0-10V Dimming) 3E (120-277V / ELV Dimming on 120V)

**Photometrics**

15W | 90CRI | 3000K

**Slimliter Face 2' (Standard)**

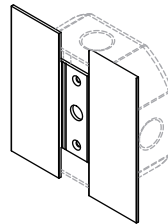
Delivered Ourput : 751 lm | CBCP : 239 cd | Beam Angle : 0°



**Optional Accessory**

**Canopy Kit**

<b>SLF</b>	<b>CK</b>	<b>WH</b>
Slimliter Face	Canopy Kit	NM (Aluminum) WH (White) BK (Black)



**\*For US standard J-BOX**